

1 2 3 4 5 6 7 8 9

THIRD ANGLE PROJECTION  DO NOT SCALE ALL DIMENSIONS IN INCHES UNLESS OTHERWISE STATED


REVISIONS		
ISSUE	DESCRIPTION	DATE
1	INITIAL ISSUE	19/04/2018
2	SHT 3 - CHANGED PITCH OF ROWS 11-13. WAS 33°, NOW 34°. CHANGED PITCH OF ROWS 13-15. WAS 29°, NOW 28°	


NOTES: UNLESS OTHERWISE SPECIFIED

- ALL SEAT LOCATING DIMENSIONS ARE CENTERED ON THE SEATS FRONT MOUNTING STUD.
- REFER TO ZODIAC 5600 CMM 25-27-39 FOR DETAILED INSTALLATION INSTRUCTIONS.

DRG No ERT/1180-201

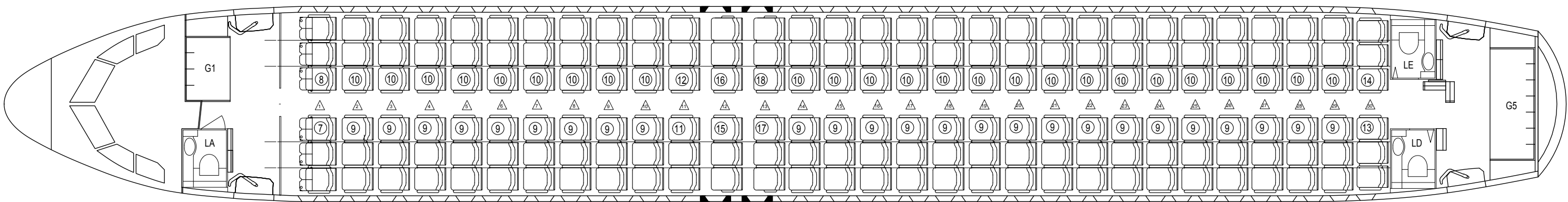
TITLE: ERTTEMP-004 ISSUE: 5

1	18	859910-416	SEAT AY, MODEL 5600, T/C RH HDCP AFT EXIT TPL, NO ASH RECEIVER, NO OUTBD ARMREST (POST SB 859910-25-2678)	
1	17	859910-415	SEAT AY, MODEL 5600, T/C LH HDCP AFT EXIT TPL, NO ASH RECEIVER, NO OUTBD ARMREST (POST SB 859910-25-2678)	
1	16	859910-414	SEAT AY, MODEL 5600, T/C RH EXIT HDCP TPL, NO ASH RECEIVER, NO RECLINE, NO OUTBD ARMREST (POST SB 859910-25-2678)	
1	15	859910-413	SEAT AY, MODEL 5600, T/C LH EXIT HDCP TPL, NO ASH RECEIVER, NO RECLINE, NO OUTBD ARMREST (POST SB 859910-25-2678)	
1	14	859910-412	SEAT AY, MODEL 5600, T/C RH HDCP NARR TPL, NO ASH RECEIVER, NO RECLINE, NO BACK TABLES	
1	13	859910-411	SEAT AY, MODEL 5600, T/C LH HDCP NARR TPL, NO ASH RECEIVER, NO RECLINE, NO BACK TABLES	
1	12	859910-406	SEAT AY, MODEL 5600, T/C RH FWD EXIT HDCP TPL, NO ASH RECEIVER, NO RECLINE	
1	11	859910-405	SEAT AY, MODEL 5600, T/C LH FWD EXIT HDCP TPL, NO ASH RECEIVER, NO RECLINE	
25	10	859910-404	SEAT AY, MODEL 5600, T/C RH HDCP TPL, NO ASH RECEIVER	
25	9	859910-403	SEAT AY, MODEL 5600, T/C LH HDCP TPL, NO ASH RECEIVER	
1	8	859910-402	SEAT AY, MODEL 5600, T/C RH IAT TPL, NO ASH RECEIVER	
1	7	859910-401	SEAT AY, MODEL 5600, T/C LH IAT TPL, NO ASH RECEIVER	
	6			
	5			
	4			
	3			
	2			
	1	ERT/1180-201-01	A320 180Y LOPA	
QTY	Item No	Part Number	Description	Note
-01				

2	1	Issue	Tolerances		 <p>© COPYRIGHT EIRTECH AVIATION SERVICES LTD INFORMATION CONTAINED HEREIN IS CLASSIFIED AS INTELLECTUAL PROPERTY RIGHTS AND SHALL NOT BE REPRODUCED BY ANY THIRD PARTY WITHOUT THE PRIOR WRITTEN PERMISSION OF EIRTECH AVIATION SERVICES LTD</p>
	LD	Drawn	Sheetwork ±0.002"	<p>Title: A320 180Y LOPA</p> <p>Aircraft Type: A320-214 Drawing Issue No: 2 Scale: NTS DRG No. ERT/1180-201</p>	
	FC	Checked	Machining ±0.004"		
	-/-	Electrical & Avionics	Angles ±0.5° (Unless otherwise stated.)		
	FC	Cabin Safety			
	SI	Structures	Compliance Verified		
	EMCA	Office of Airworthiness			

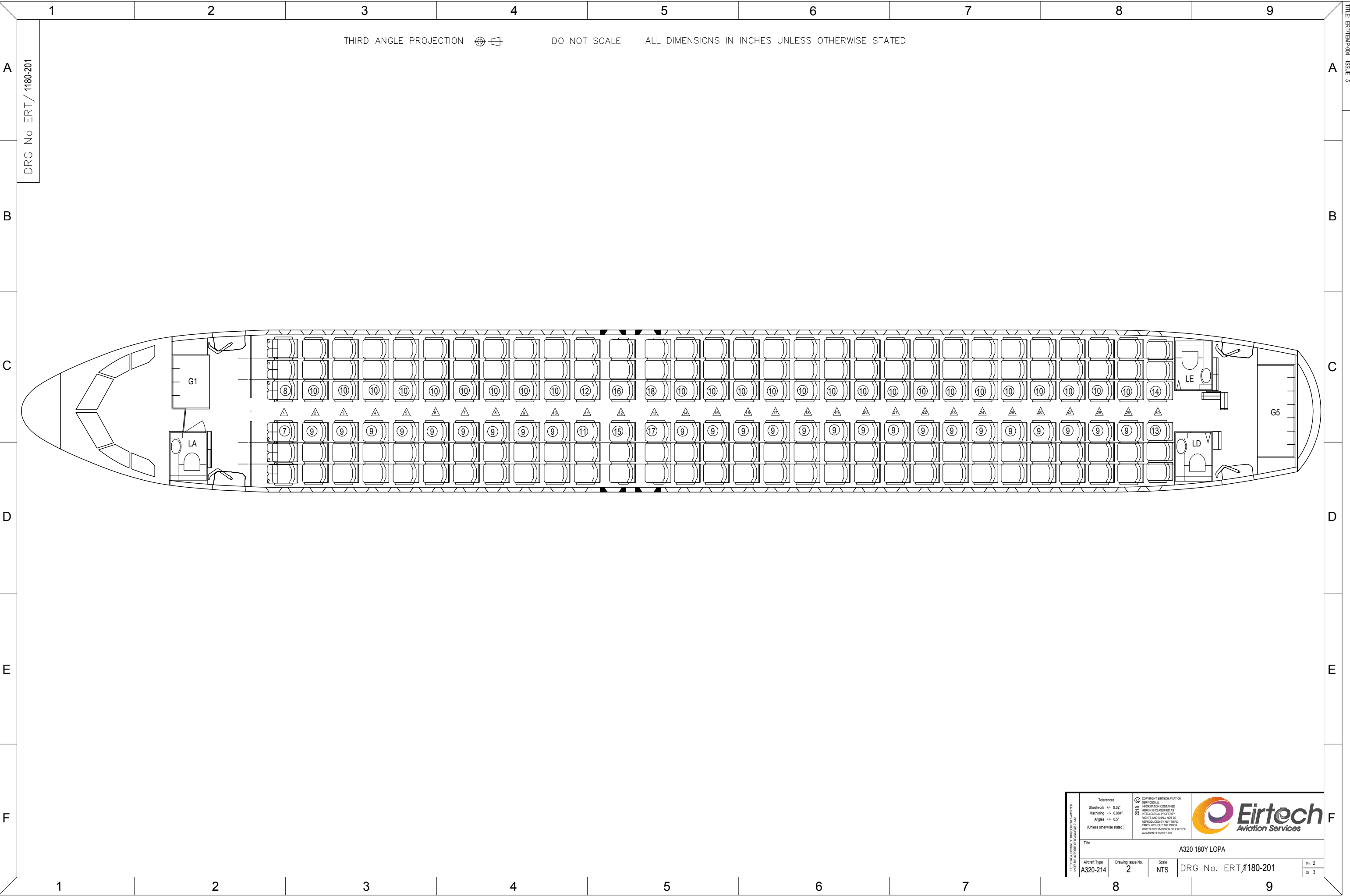
1 2 3 4 5 6 7 8 9

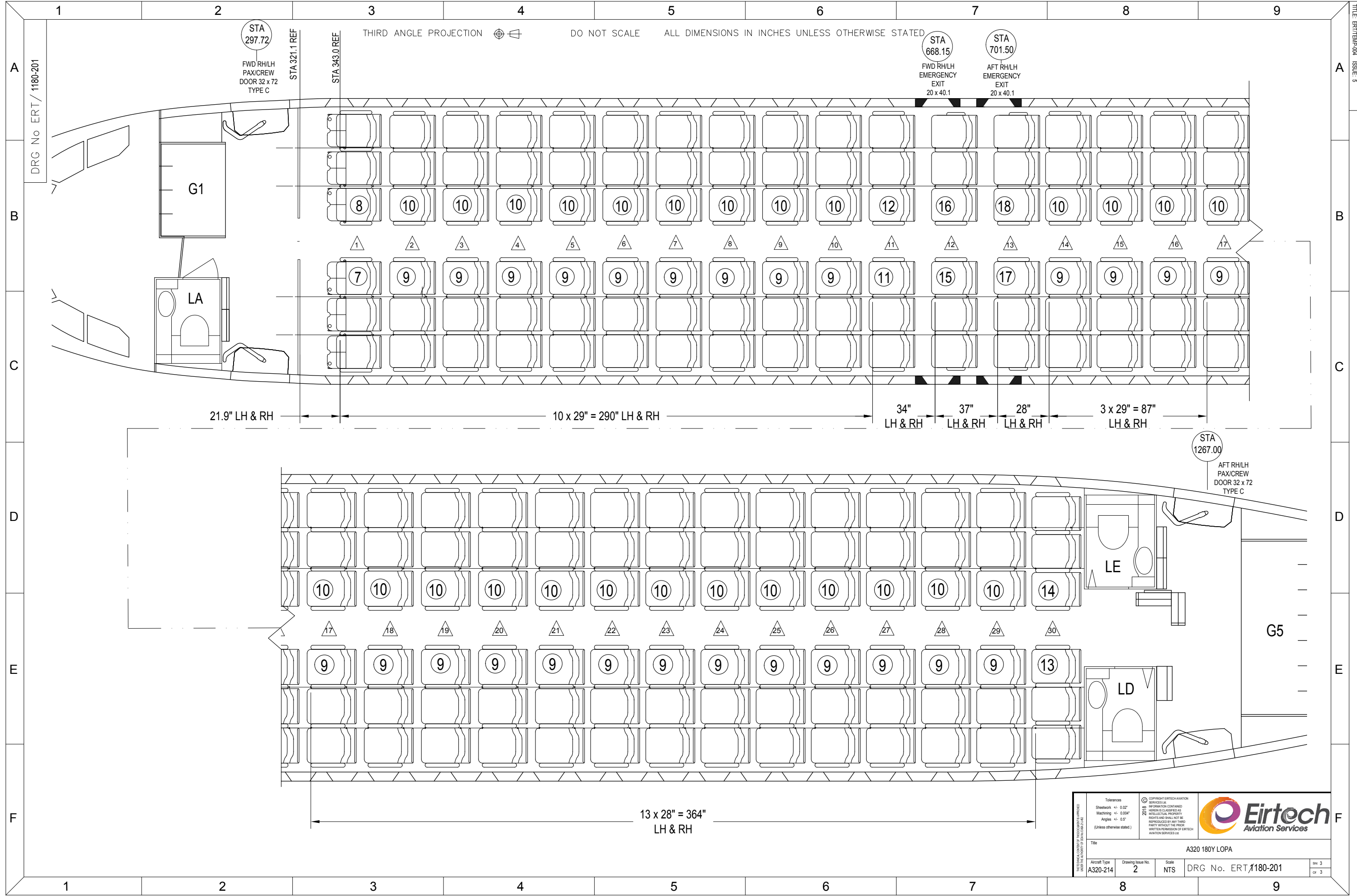
THIRD ANGLE PROJECTION  DO NOT SCALE ALL DIMENSIONS IN INCHES UNLESS OTHERWISE STATED



DRG No ERT/ 1180-201

Tolerances Sheetwork $\pm 0.02"$ Machining $\pm 0.004"$ Angles $\pm 0.5^\circ$ (Unless otherwise stated.)		COPYRIGHT EIRTECH AVIATION SERVICES LTD INFORMATION CONTAINED HEREIN IS CLASSIFIED AS INTELLECTUAL PROPERTY RIGHTS AND SHALL NOT BE REPRODUCED BY ANY THIRD PARTY WITHOUT THE PRIOR WRITTEN PERMISSION OF EIRTECH AVIATION SERVICES LTD.		
Title: A320 180Y LOPA				
Aircraft Type	Drawing Issue No.	Scale	DRG No. ERT/1180-201	of 2 cr 3
A320-214	2	NTS		





THIRD ANGLE PROJECTION DO NOT SCALE ALL DIMENSIONS IN INCHES UNLESS OTHERWISE STATED

STA 297.72
FWD RH/LH
PAX/CREW
DOOR 32 x 72
TYPE C

STA 668.15
FWD RH/LH
EMERGENCY
EXIT
20 x 40.1

STA 701.50
AFT RH/LH
EMERGENCY
EXIT
20 x 40.1

STA 1267.00
AFT RH/LH
PAX/CREW
DOOR 32 x 72
TYPE C

21.9" LH & RH

10 x 29" = 290" LH & RH

34" LH & RH 37" LH & RH 28" LH & RH 3 x 29" = 87" LH & RH

13 x 28" = 364" LH & RH

<small>THESE DIMENSIONS ARE APPROXIMATE AND SUBJECT TO CHANGE WITHOUT NOTICE.</small>	<small>Tolerances</small> Sheetwork ± 0.02" Machining ± 0.004" Angles ± 0.5° <small>(Unless otherwise stated.)</small>	<small>© COPYRIGHT EIRTECH AVIATION SERVICES LTD. ALL INFORMATION CONTAINED HEREIN IS CLASSIFIED AS INTELLECTUAL PROPERTY RIGHTS AND SHALL NOT BE REPRODUCED BY ANY THIRD PARTY WITHOUT THE PRIOR WRITTEN PERMISSION OF EIRTECH AVIATION SERVICES LTD.</small>	
	Title: A320 180Y LOPA		
	Aircraft Type: A320-214 Drawing Issue No.: 2 Scale: NTS	DRG No. ERT/1180-201	