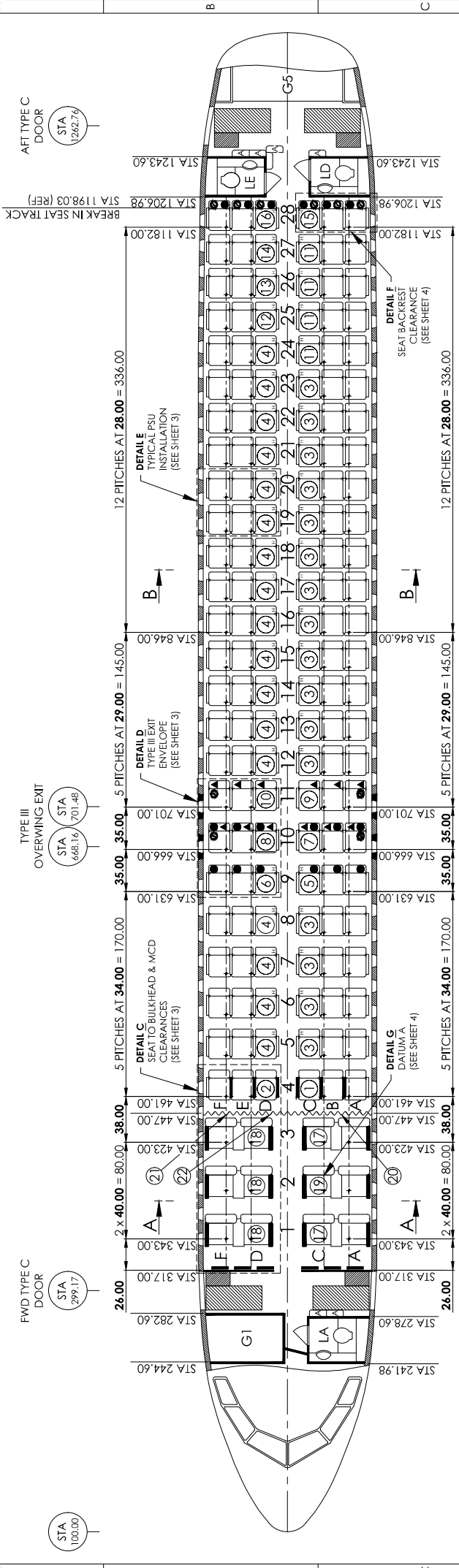


DRAWING NUMBER
LYX252JCAERO1810



NOT AFFECTED AREA BY THIS CHANGE

1 -101 INSTALLATION

AFFECTED AREA BY THIS CHANGE

- AIRCRAFT DELIVERY AND PRE-MOD CABIN CONFIGURATIONS:
- TC HOLDER (AIRBUS) DELIVERY LOPA NO. 320-25-23463 REV. F / DUAL CLASS 158 PAX (BJ/150).
 - PRE-MOD J&C AERO LOPA NO. JCA252JCAERO1616 REV. A / FULL ECONOMY 180 PAX (180Y).

J&C AERO
E&L
P.O. BOX 100
1600 W. 10TH ST.
DENVER, CO 80202

REVISIONS:

| NO. | DATE | DESCRIPTION |
|-----|----------|-------------------------|
| 1 | 03/20/20 | ISSUED FOR CONSTRUCTION |

APPROVED BY: [Signature]

DATE: 03/20/20

SCALE: 1:1

PROJECT: LYX252JCAERO1810

DESIGNER: JCAERO/ECN/1810

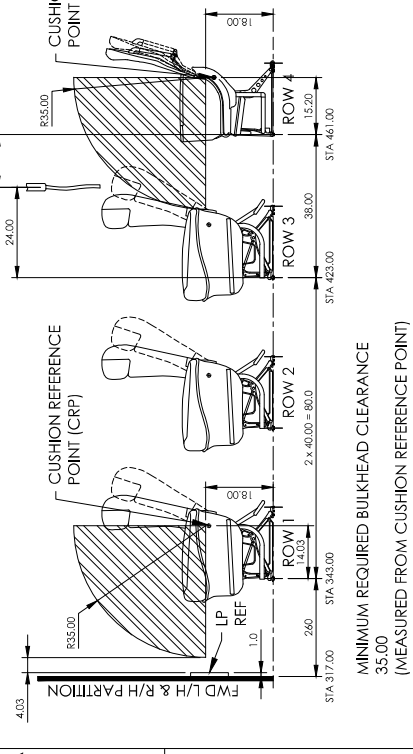
CHECKED BY: JCAERO/ECN/1810

DATE: 03/20/20

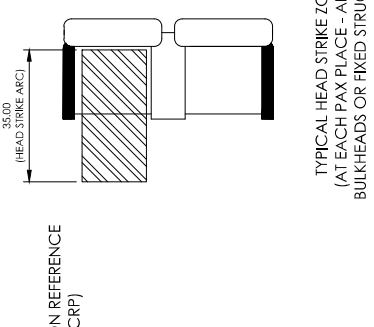
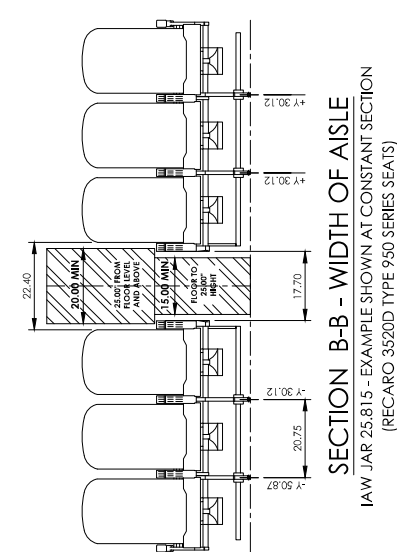
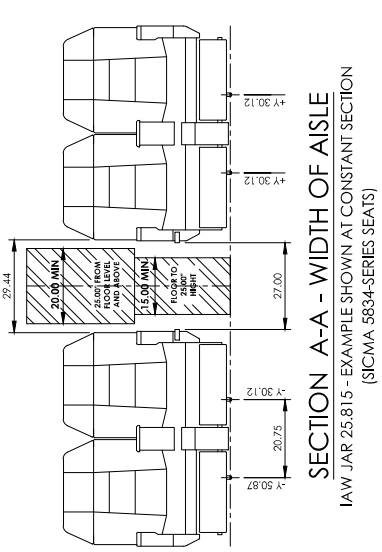
PROJECT: LYX252JCAERO1810

REV. 2 OF 4

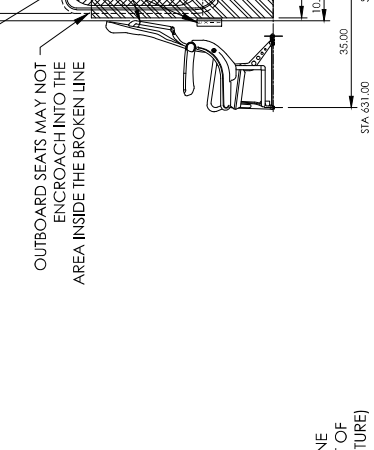
| QTY. | QTY. REF. | MAP ITEM | PART NUMBER | DESCRIPTION | MANU. | CMW | STATUS | POST-MOD. PART NUMBER | NOTED |
|---|-----------|----------|-----------------|--|-------|-----|----------|--------------------------|-------|
| 1 | 22 | | A0B2110-1 | MCD - CTR | | | NEW | | |
| 1 | 21 | | 97-05-125-8 | LATERAL MCD ARM - R/H | | | NEW | | |
| 1 | 20 | | 97-05-125-7 | LATERAL MCD ARM - L/H | | | NEW | | |
| 1 | 19 | | 583421-1-11 | DOUBLE L/H SEAT - IAT | | | NEW | | |
| 3 | 18 | | 583420-1-02 | DOUBLE R/H SEAT - IAT | | | NEW | | |
| 2 | 17 | | 583421-1-03 | DOUBLE L/H SEAT - IAT | | | NEW | | |
| 1 | 16 | | 3520D950-32-521 | TRIPLE R/H SEAT - HC, NO REC, NO OIBD, NO FDIR | | | EXISTING | EPA-3520D950-32-521-154A | [7] |
| 1 | 15 | | 3520D950-31-521 | TRIPLE L/H SEAT - HC, NO REC, NO OIBD | | | EXISTING | EPA-3520D950-31-521-154A | [7] |
| 1 | 14 | | 3520D950-32-371 | TRIPLE R/H SEAT - HC, STRETCHER, 17" SEATLEG | | | EXISTING | | |
| 1 | 13 | | 3520D950-32-291 | TRIPLE R/H SEAT - HC, STRETCHER, 17" SEATLEG | | | EXISTING | | |
| 1 | 12 | | 3520D950-32-341 | TRIPLE R/H SEAT - HC, STRETCHER | | | EXISTING | | |
| 4 | 11 | | 3520D950-31-391 | TRIPLE L/H SEAT - HC, STRETCHER, 17" SEATLEG | | | EXISTING | | |
| 1 | 10 | | 3520D950-32-311 | TRIPLE R/H SEAT - HC, NO OIBD, ARMREST | | | EXISTING | EPA-3520D950-32-311-154A | [6] |
| 1 | 9 | | 3520D950-31-311 | TRIPLE L/H SEAT - HC, NO OIBD, ARMREST | | | EXISTING | EPA-3520D950-31-311-154A | [6] |
| 1 | 8 | | 3520D950-32-311 | TRIPLE R/H SEAT - HC, NO REC, NO OIBD, ARMREST, LATCH OPENS INBOARD ONLY | | | EXISTING | EPA-3520D950-32-311-154A | [6] |
| 1 | 7 | | 3520D950-31-311 | TRIPLE L/H SEAT - HC, NO REC, NO OIBD, ARMREST, LATCH OPENS INBOARD ONLY | | | EXISTING | EPA-3520D950-31-311-154A | [6] |
| 1 | 6 | | 3520D950-32-311 | TRIPLE R/H SEAT - HC, NO REC, LATCH OPENS | | | EXISTING | EPA-3520D950-32-311-154A | [7] |
| 1 | 5 | | 3520D950-31-311 | TRIPLE L/H SEAT - HC, NO REC, LATCH OPENS | | | EXISTING | EPA-3520D950-31-311-154A | [7] |
| 17 | 4 | | 3520D950-32-311 | TRIPLE R/H SEAT - HC, STD | | | EXISTING | | |
| 16 | 3 | | 3520D950-31-311 | TRIPLE L/H SEAT - HC, STD | | | EXISTING | | |
| 1 | 2 | | 3520D950-32-511 | TRIPLE R/H SEAT - IAT | | | EXISTING | | |
| 1 | 1 | | 3520D950-31-511 | TRIPLE L/H SEAT - IAT | | | EXISTING | | |
| <p>162 PAX (122/150Y) LAYOUT OF PASSENGER ACCOMMODATION</p> | | | | | | | | | |



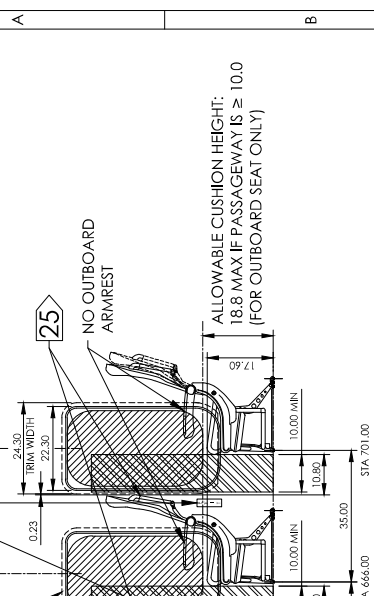
DETAIL C
SEAT TO BULKHEAD & MCD CLEARANCES
R/H SHOWN (L/H SYMMETRICAL)



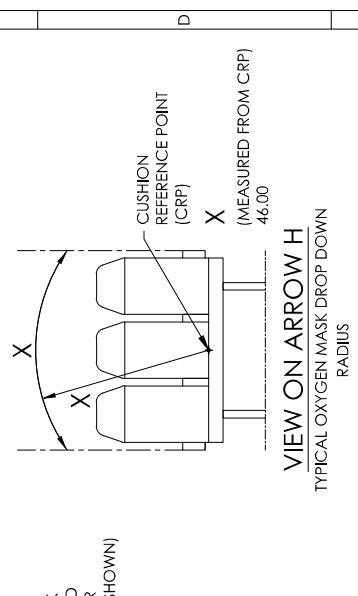
TYPICAL HEAD STRIKE ZONE
(AT EACH PAX PLACE - AFT OF
BULKHEADS OR FIXED STRUCTURE)



DETAIL E
TYPICAL PSU/PSIU ARRANGEMENT

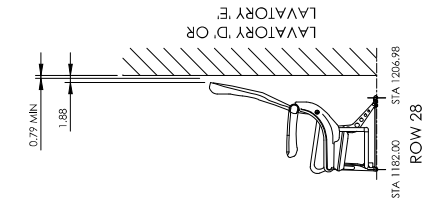


3 DETAIL D
TYPICAL III EXIT PASSAGEWAY ENVELOPE & MAXIMUM CUSHION HEIGHT
IAW AIRBUS FRAME SPECIFICATION
NO. 2521 MIF 10000.00

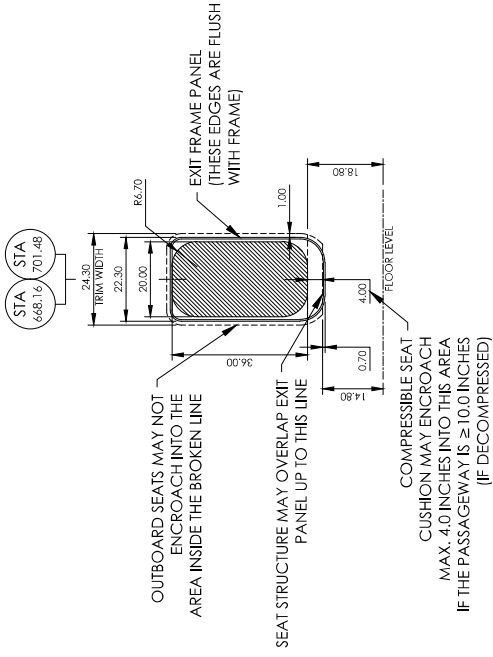


VIEW ON ARROW H
TYPICAL OXYGEN MASK DROP DOWN
RADIUS

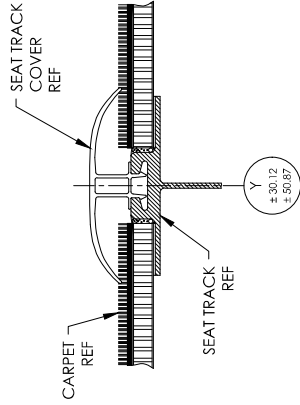
| | | |
|--|--|---|
| | DRAWING NUMBER: LYX252JCAERO1810 | DRAWN BY: SEE JCAERO/ECN/1810 |
| | TITLE: 162 PAX [12J/150Y] LAYOUT OF PASSENGER ACCOMMODATION | CHECKED BY: SEE JCAERO/ECN/1810 |
| PROJECT: AIRBUS A320-214 | SCALE: A2 | ALL DIMENSIONS UNLESS OTHERWISE SPECIFIED |
| MARK: 03880, 03866 | REGISTRATION: - | PROJECTION: - |
| WWW.J&CAEROSPACE.COM PHONE: +43 1 31 297 00 | J&C AEROSPACE P.O. BOX 71106 VIENNA, AUSTRIA | SHEET 3 OF 4 |



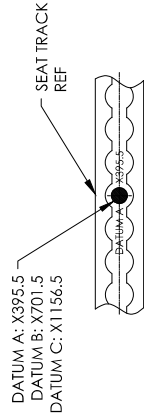
DETAIL F
SEAT BACKREST CLEARANCE
L/H SHOWN (R/H SYMMETRICAL)
IAW AIRBUS FRAME SPECIFICATION
NO. 2521 M1F 1000.00



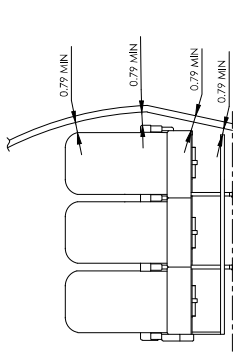
DETAIL I
TYPICAL TYPE III EMERGENCY EXIT HATCH ENVELOPE
IAW AIRBUS FRAME SPECIFICATION
NO. 2521 M1F 1000.00



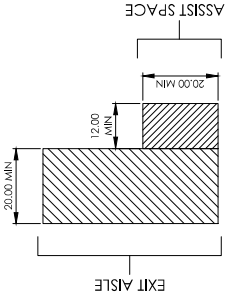
TYPICAL SEAT TRACK COVER INSTALLATION



DETAIL G
DATUM A



MINIMUM CLEARANCE FROM THE SIDEWALL
IAW AIRBUS FRAME SPECIFICATION
NO. 2521 M1F 1000.00



TYPICAL TYPE I, TYPE C DOOR EXIT AISLE & ASSIST SPACE

(REFER TO JAR 25.813 EMERGENCY EXIT ACCESS AND EASE OF OPERATION)



J&C AEROSPACE
P.O. BOX 71106
DALLAS, TEXAS 75271-0106

| | | | |
|--|------------------------------|--|------------------------------------|
| WWW.AIRBUS.COM PHONE: +33 1 21 20 70 00 FAX: +33 1 21 20 70 01 | AIRCRAFT: AIRBUS A320-214 | VALUES USING TOLERANCES: DIMENSIONS DIMENSIONS DIMENSIONS | DRAWN BY: SEE JCAERO/ECN/1810 |
| MARK: 03880, 03866 | REGISTRATION: - | SCALE: SEE DIMENSIONS | CHECKED BY: SEE JCAERO/ECN/1810 |
| #TITLE: 162 PAX [12/1/150Y] LAYOUT OF PASSENGER ACCOMMODATION | NTS | A2 | PROJECTION |

| | |
|-------------------------------------|--------|
| DRAWING NUMBER: LYX252JCAERO1810 | REV. B |
| SHEET 4 OF 4 | |