

GENERAL NOTES:

- THIS DRAWING IS TO BE CARRIED OUT IN CONJUNCTION WITH ERT-SB-3427.
- SEAT LOCATION DIMENSIONS ARE TO THE CENTERLINE OF FRONT STUD OF INBOARD LEG. SEE BILL OF MATERIALS FOR APPROVED SEAT P/No's.
- POSITION PASSENGER SERVICE UNITS (PSIUs) AS PER PSU LAYOUT DRAWING NO. ERT/1735-221.
- ALL SEATS MUST BE EQUIPPED WITH A LAP STYLE SEAT BELT MEETING TSO C22G USING A METAL TO METAL LATCHING DEVICE.
- ALL PASSENGER SEATS MUST BE FIRE BLOCKED IN ACCORDANCE WITH CS 25.853 (c), OR EQUIVALENT STANDARD AT LATER AMENDMENT. ANY UPHOLSTERY CHANGES MUST MEET THE SAME STANDARDS.
- AISLE WIDTH IS COMPLIANT WITH CS 25.815 (SEE SHEET 2).
- INTERIOR ITEMS NOT SPECIFICALLY CALLED OUT ARE EXISTING ON THIS AIRCRAFT. ITEM 22 REFERS.
- INSTALL SEAT TRACK CAPPING IN EXPOSED TRACK AREAS TO ACCOMMODATE NEW SEAT LOCATIONS.
- ENSURE EACH PAX PLACE HAS AN APPROVED LIFE JACKET.
- LH DIMENSIONS SHOWN. RH DIMENSIONS IDENTICAL UNLESS OTHERWISE STATED.
- BASED ON EFFECTIVE EXIT CONFIGURATIONS AND MONUMENT INSTALLATIONS, HEAD-STRIKE CLEARANCE ANALYSED IN FWD CABIN ONLY. SEE SHEET 2.

FLAG NOTES:

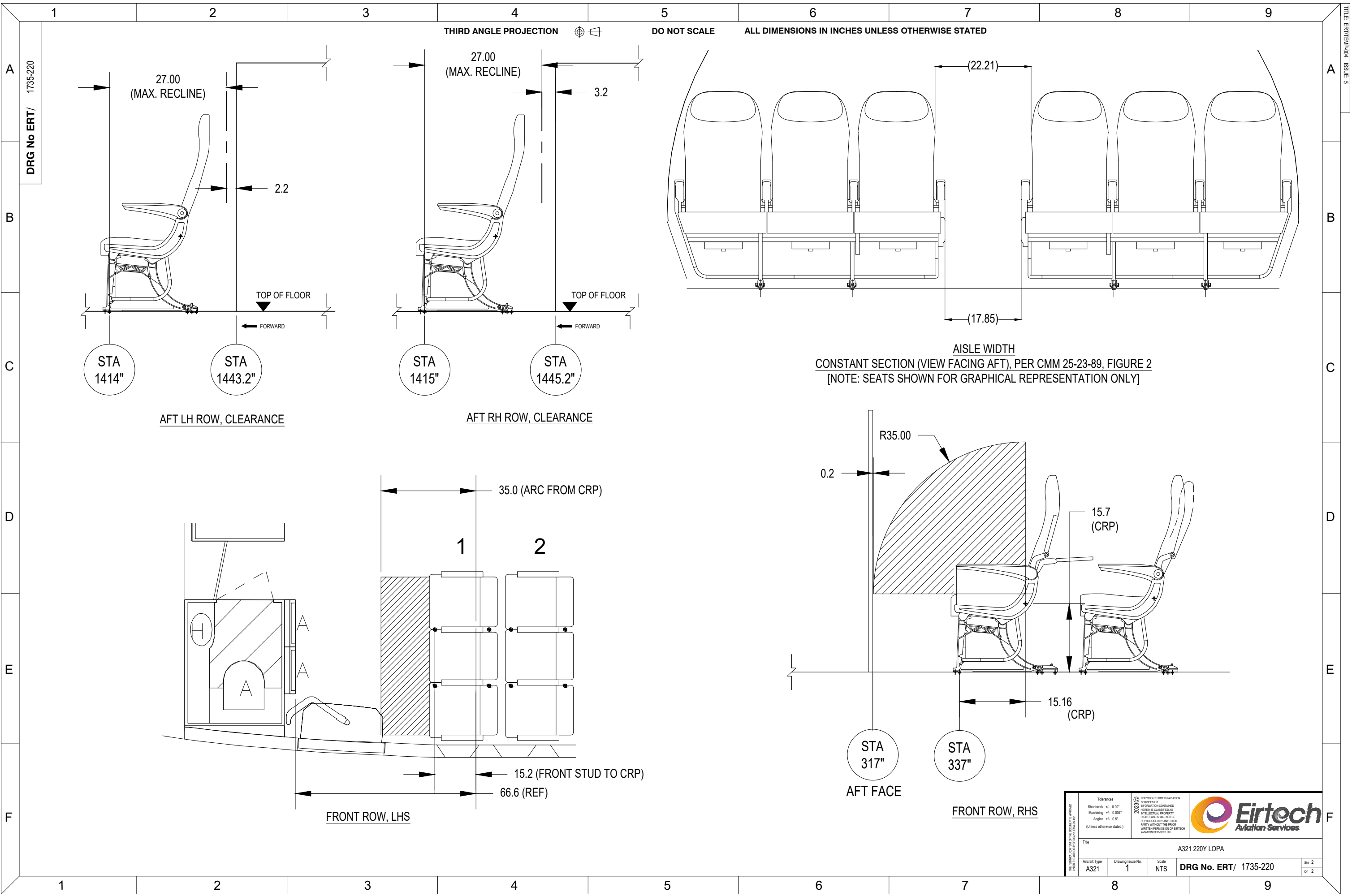
- RECLINE FUNCTION OF APPLICABLE SEAT ASSEMBLIES DEACTIVATED IN ACCORDANCE WITH RECARO CMM 25-23-89. EIRTECH SERVICE BULLETIN ERT-SB-3427 REFERS.

ERT/1735-220-01 - 220Y LOPA
SEAT PITCHES APPLICABLE TO BOTH SIDES UNLESS OTHERWISE STATED

- KEY:**
- MINIMUM AISLE WIDTHS
 - NO RECLINE
 - NO RECLINE, NO BREAKOVER
 - NO BREAKOVER
 - HANDICAP SEAT
 - LIMITED RECLINE

AR	22	ACIFL00105-289/ACI	SEAT-TRACK CAPPING	ALT. PER IPC
1	21	3510D389-31-211	SEAT TPL LH IAT	
25	20	3510D389-31-011	SEAT TPL LH STD (HC)	
4	19	3510D389-31-311	SEAT TPL LH STD (HC)	
1	18	3510D389-31-521	SEAT TPL LH IAT EXIT	
1	17	3510D389-21-011	SEAT DBL LH NARROW (NO COATHOOK, SPCL LATCH OPENS I/B ONLY)	
1	16	3510D389-31-221	SEAT TPL LH IAT (EXIT)	
3	15	3510D389-31-071	SEAT TPL LH STD (HC, STRETCHER PROVISION)	
1	14	3510D389-31-061	SEAT TPL LH NARROW (HC, STRETCHER PROVISION, NO BACKREST TABLE)	
1	13	3510D389-32-211	SEAT TPL RH IAT	
30	12	3510D389-32-011	SEAT TPL RH STD	
2	11	3510D389-32-311	SEAT TPL RH STD (HC)	
1	10	3510D389-22-011	SEAT DBL RH NARROW (NO COATHOOK, SPCL LATCH OPENS I/B ONLY)	
1	9	3510D389-32-521	SEAT TPL RH IAT EXIT	
	8			
1	7	3510D389-32-221	SEAT TPL RH IAT (EXIT)	
	6			
1	5	3510D389-32-061	SEAT TPL RH NARROW (HC, STRETCHER PROVISION, NO BACKREST TABLE)	
	4			
	3			
	2			
	1	ERT/1735-220-01	220Y LOPA, A321	
-01	Item No	Part Number	Description	Note
QTY	1	DR2	LOF	Issue
		DR1	LOF	Drawn
				Checked
				Electrical & Avionics
				Cabin Safety
				Structures
				Office of Airworthiness
<p>2020 © COPYRIGHT EIRTECH AVIATION SERVICES LTD. INFORMATION CONTAINED HEREIN IS CLASSIFIED AS UNCLASSIFIED. ALL RIGHTS AND SHALL NOT BE REPRODUCED BY ANY THIRD PARTY WITHOUT THE PRIOR WRITTEN PERMISSION OF EIRTECH AVIATION SERVICES LTD.</p> <p>Eirtech Aviation Services</p> <p>Title: A321 220Y LOPA</p> <p>Aircraft Type: A321 Drawing Issue No: 1 Scale: NTS</p> <p>DRG No. ERT/ 1735-220</p> <p>Sheet 1 of 2</p>				

DRG No ERT/ 1735-220



THIRD ANGLE PROJECTION DO NOT SCALE ALL DIMENSIONS IN INCHES UNLESS OTHERWISE STATED

AFT LH ROW, CLEARANCE

AFT RH ROW, CLEARANCE

AISLE WIDTH
CONSTANT SECTION (VIEW FACING AFT), PER CMM 25-23-89, FIGURE 2
[NOTE: SEATS SHOWN FOR GRAPHICAL REPRESENTATION ONLY]

FRONT ROW, LHS

AFT FACE

FRONT ROW, RHS

Title A321 220Y LOPA		Aircraft Type A321		Drawing Issue No. 1		Scale NTS		DRG No. ERT/ 1735-220		She 2 or 2	
-------------------------	--	-----------------------	--	------------------------	--	--------------	--	-----------------------	--	---------------	--



2020 © COPYRIGHT EIRTECH AVIATION SERVICES LLC. ALL INFORMATION CONTAINED HEREIN IS CLASSIFIED AS INTELLECTUAL PROPERTY RIGHTS AND SHALL NOT BE REPRODUCED BY ANY THIRD PARTY WITHOUT THE PRIOR WRITTEN PERMISSION OF EIRTECH AVIATION SERVICES LLC.

THIS DRAWING IS THE PROPERTY OF EIRTECH AVIATION SERVICES LLC. IT IS TO BE USED ONLY FOR THE PROJECT AND FOR THE AIRCRAFT TYPE SPECIFIED. IT IS NOT TO BE REPRODUCED OR TRANSMITTED IN ANY FORM OR BY ANY MEANS, ELECTRONIC OR MECHANICAL, INCLUDING PHOTOCOPYING, RECORDING, OR BY ANY INFORMATION STORAGE AND RETRIEVAL SYSTEM, WITHOUT THE PRIOR WRITTEN PERMISSION OF EIRTECH AVIATION SERVICES LLC.