

### A321-200-220PAX YC

**NOTES:**

- <GN01>: THIS DRAWING IS ONLY APPLICABLE FOR AIRCRAFT AIRBUS A321 MSN 4461.
- <GN02>: EMERGENCY EXITS MUST BE ACCESSIBLE PER JAR 25.813.
- <GN03>: AISLE WIDTHS MUST MEET REQUIREMENTS SET FORTH IN JAR 25.815.
- <GN04>: THIS MODIFICATION HAS BEEN DESIGNED BASED ON REFERENCE DRAWING 321-19024-100 rev0.
- <GN05>: ALL SEATS EXCEPT THE INDICATED ARE:
  - NO BREAKOVER
  - NO RECLINE
  - NO COAT HOOK
  - NO ASHTRAY
  - BACKTABLE DEPLOYMENT W/O FRICTION
  - ALL AISLE ARMRESTS MOVABLE EXCEPT IAT AND HC ARMREST
  - ALL TABLE LATCHES COMPLETELY HIDDEN IN RECESS.
- <GN06>: DO NOT SCALE FROM DRAWING. USE ONLY DIMENSIONS INDICATED.
- <GN07>: ALL PASSENGER SEATS RECARO MODEL 3510H SERIES 989 CONFORM TSO-C39A.
- <GN08>: FOR SEAT INSTALLATION REFER TO CMM 25-26-73 AND IN ACCORDING WITH AMM.
- <GN09>: ALL PITCHES ARE EQUAL ON LH/RH.
- <GN10>: SEAT LOCATING DIMENSIONS ARE TO CENTER LINE OF FRONT STUD OF INBOARD LEG.
  - 1- DIMENSIONS MEASURED TO WINDSCREEN PANEL CENTER LINE.
  - 2- CENTER OF FRONT STUD TO BE DEFINED AS MEASURING POINT OF PASSENGER SEATS.
  - 3- THE ANTIRATTLE NUT TO BE TORQUED TO 2Nm(18 In-Lbs) PLUS 1/4 TURN.
  - 4- MARK THE AFT FITTING WITH BLACK COLOR AFTER ASSEMBLY ACCORDING TO AMM.
  - 5- REAR FITTING TO BE TORQUED TO 9±1Nm (80±9 In-Lbs).
  - 6- ALL EMERGENCY EXITS ARE ACCESSIBLE AND ACCORDING TO JAR 25,813 AS DEFINED:
    - 6A- THE PASSAGeways TO MAIN (TYPE C) EXITS IS UNOBSTRUCTED AND AT LEAST 508mm (20 INCHES) WIDE.
    - 6B- ASSISTANCE SPACE NEAR EACH MAIN (LH/RH DOOR 1 AND 4) IS UNOBSTRUCTED RECTANGLE ON THE FLOOR AND IS AT LEAST 305MMx508MM(12"x20")
    - 6C- ASSISTANCE SPACE NEAR EMERGENCY EXIT (LH/RH DOOR 2 & 3) IS UNOBSTRUCTED RECTANGLE ON THE FLOOR AND IS AT LEAST 508MMx508MM(20"x20")
  - 7- HANDICAP ARMREST.
  - 8- NO BACKTABLE.
  - 9- FOLDABLE ARMREST AISLE SIDE.

PASSENGERS SEATS & CABIN ATTENDANT SEATS						
ITEM	QTY	DESCRIPTION	P/N	MANUFACTURER	REMARKS	
1	3	LH E/C TPL IAT	3510H989-31-212	RECARO	NO RECLINE	
2	2	LH E/C TPL STD	3510H989-31-082	RECARO		
3	30	LH E/C TPL STD	3510H989-31-011	RECARO		
4	1	LH E/C DBL	3510H989-21-011	RECARO		
5	1	LH E/C TPL NRW	3510H989-31-051	RECARO		
11	3	RH E/C TPL IAT	3510H989-32-212	RECARO		
12	2	RH E/C TPL STD	3510H989-32-082	RECARO		
13	30	RH E/C TPL STD	3510H989-32-011	RECARO		
14	1	RH E/C DBL	3510H989-22-011	RECARO		
15	1	RH E/C TPL NRW	3510H989-32-051	RECARO		
16	1	SEAT-CABIN ATTENDANT	WA93BYU3YS11096	ZODIAC SICMA		EXISTING PART
17	1	SEAT-CABIN ATTENDANT	WA25BYU3YS11096	ZODIAC SICMA		EXISTING PART
18	2	SEAT-CABIN ATTENDANT	FA24VYU3YS11096	ZODIAC SICMA		1x EXISTING PART / 1x RELOCATED PART
19	1	SEAT-CABIN ATTENDANT	FA34VYU3YS11096	ZODIAC SICMA	EXISTING PART	
20	1	SEAT-CABIN ATTENDANT	FA00B3U3YS11096	ZODIAC SICMA	EXISTING PART	
21	1	SEAT-CABIN ATTENDANT	RL27FYU3YS10096	ZODIAC SICMA	EXISTING PART, REINSTALLED	

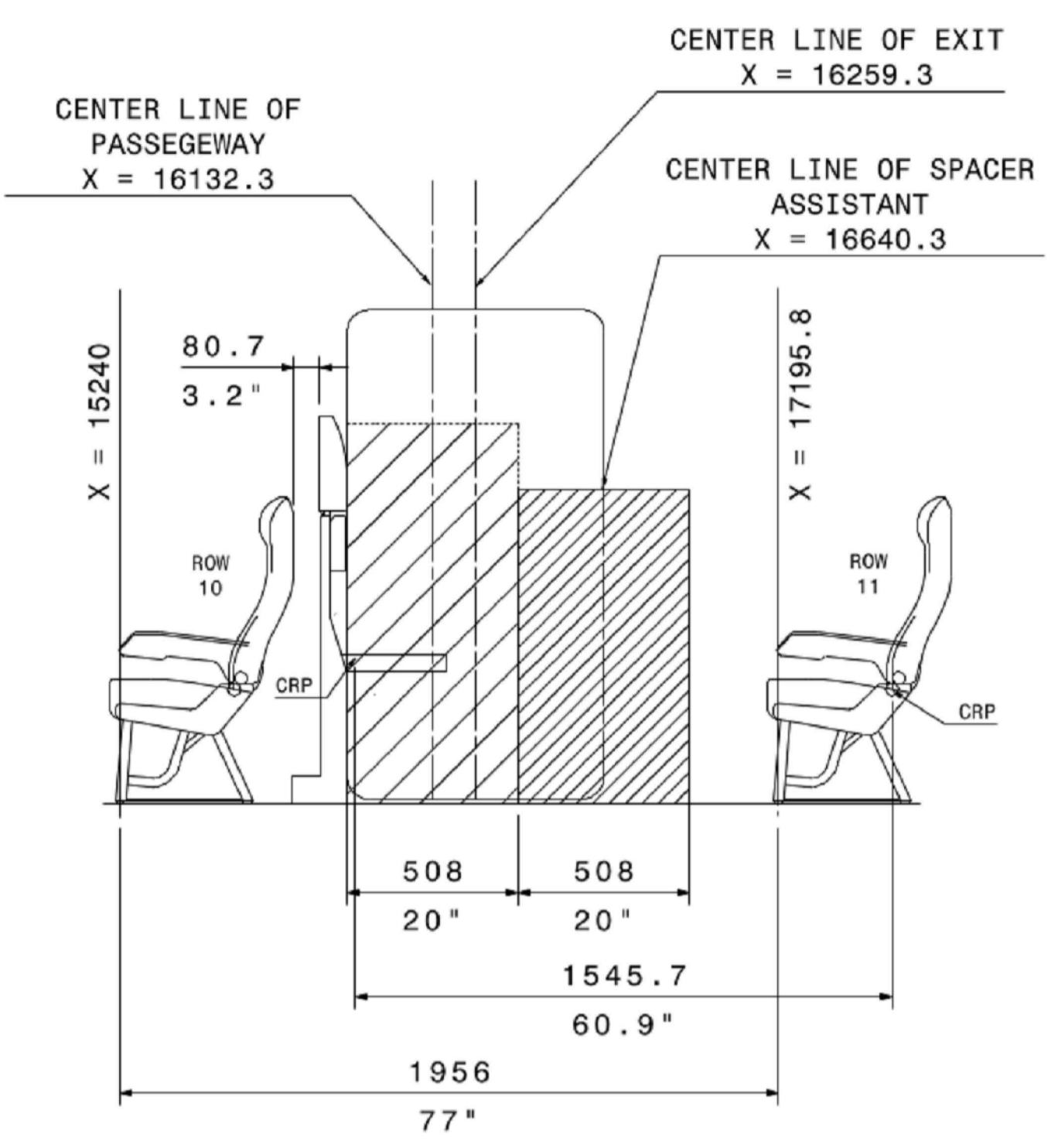
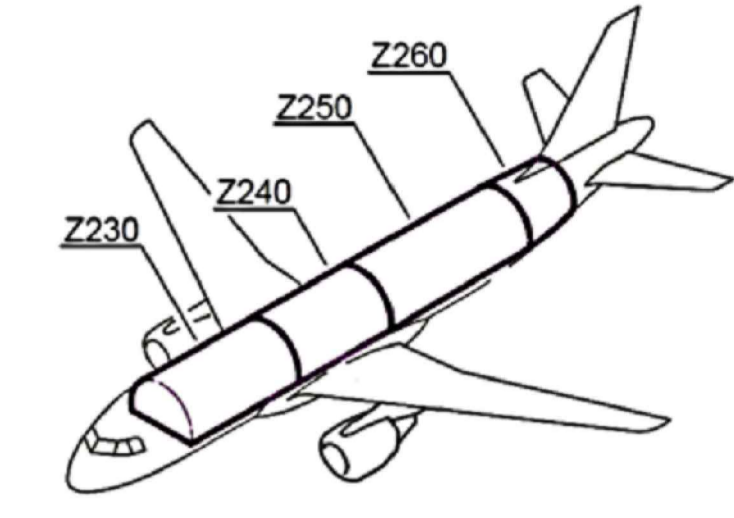
**LEGEND**

- MR MAGAZINE RACK
- LP LITERATURE POCKET
- IN ARMREST TABLE
- P PARTITION
- L LAVATORY
- A ATTENDANT SEAT
- G GALLEY
- D DOGHOUSE
- EXIT PATH 20"WIDTH
- ASSISTANCE SPACE 12" x20"
- ASSISTANCE SPACE 20" x20"

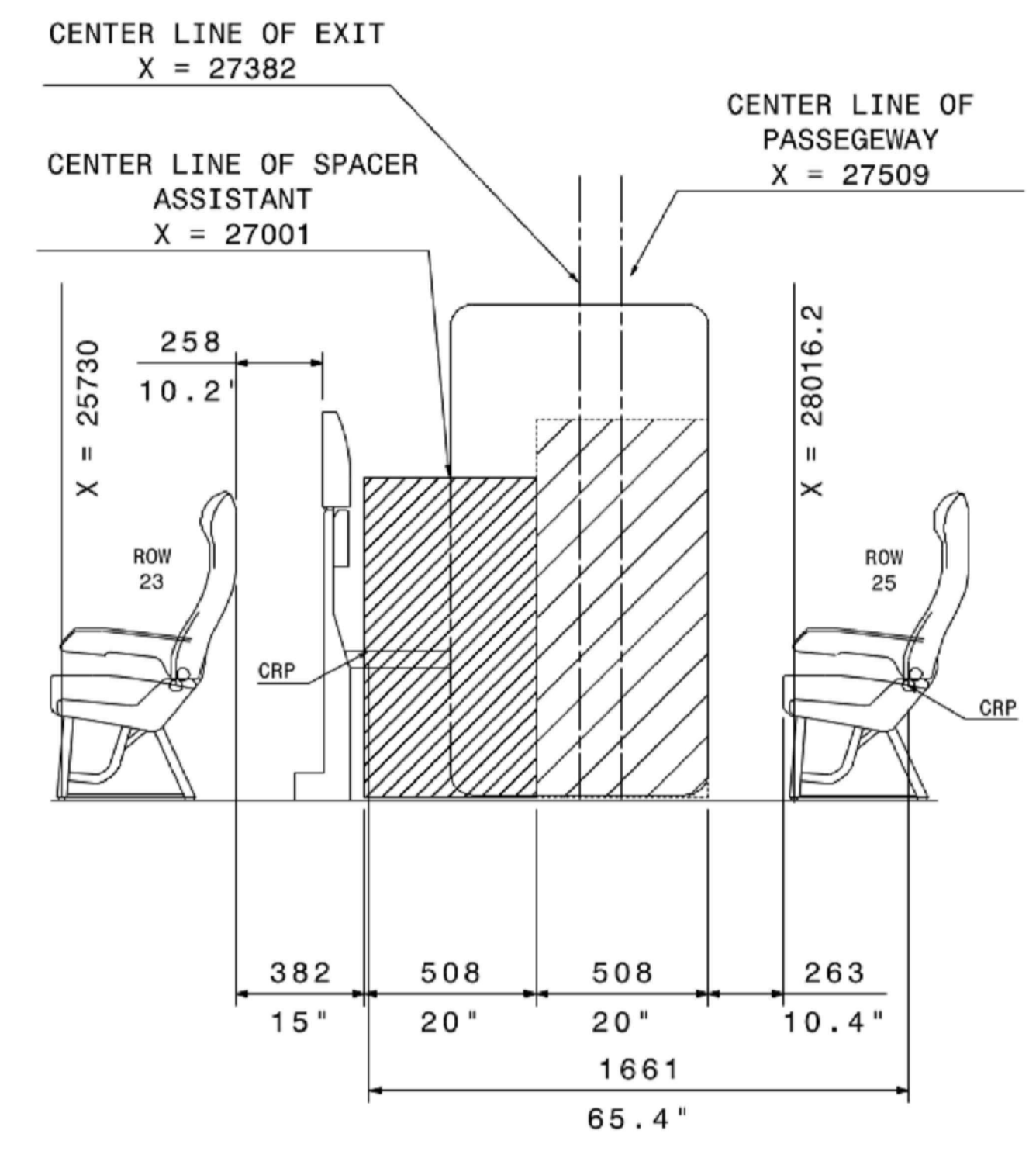
Copyright (C) SR Technics Switzerland. This document and the information disclosed herein are proprietary data of SR Technics. Neither this document nor the information contained herein shall be reproduced, used or disclosed to others without the prior written authorization of SR Technics.

TITLE LOPA		DATE		USER ID		NAME	
DRAWING NUMBER 100007557_01		27-Apr-2020		509561		Maria Teresa Sanchez	
APPROVAL REFERENCE S.OAEZ.001939		27-Apr-2020		509085		Ansel Antero Jukon Lubo	
ATA 25000		27-Apr-2020		508274		Hector Alonso-Ramos	
SHEET 1 OF 3		27-Apr-2020		509085		Ansel Antero Jukon Lubo	
REVISION A		27-Apr-2020		509085		Ansel Antero Jukon Lubo	
PRODUCT A321		S/N 4461		DWG TYPE LAY		PROJECT A-01627948	

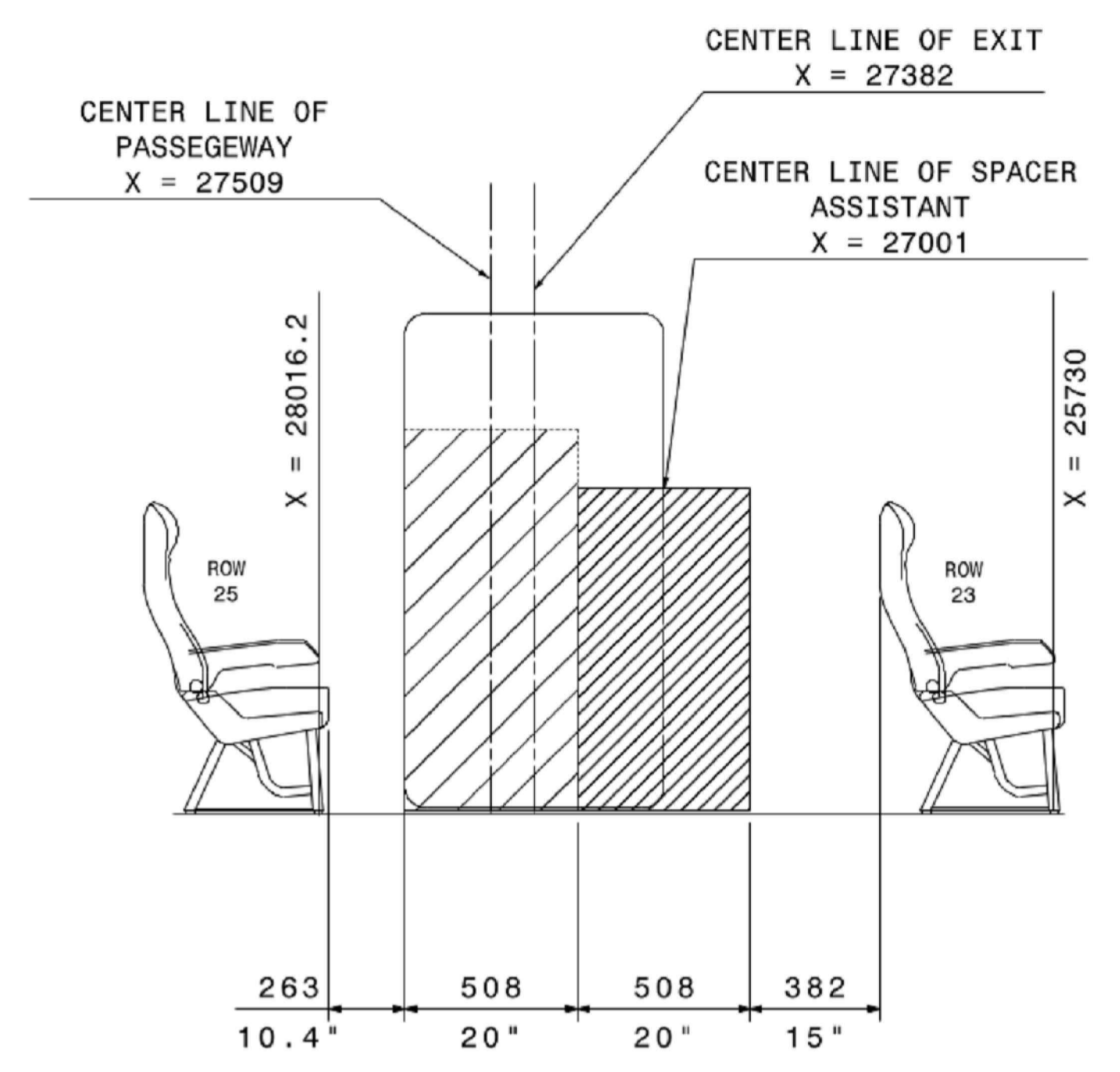
REVISION	DESCRIPTION	DATE
A	INITIAL	-



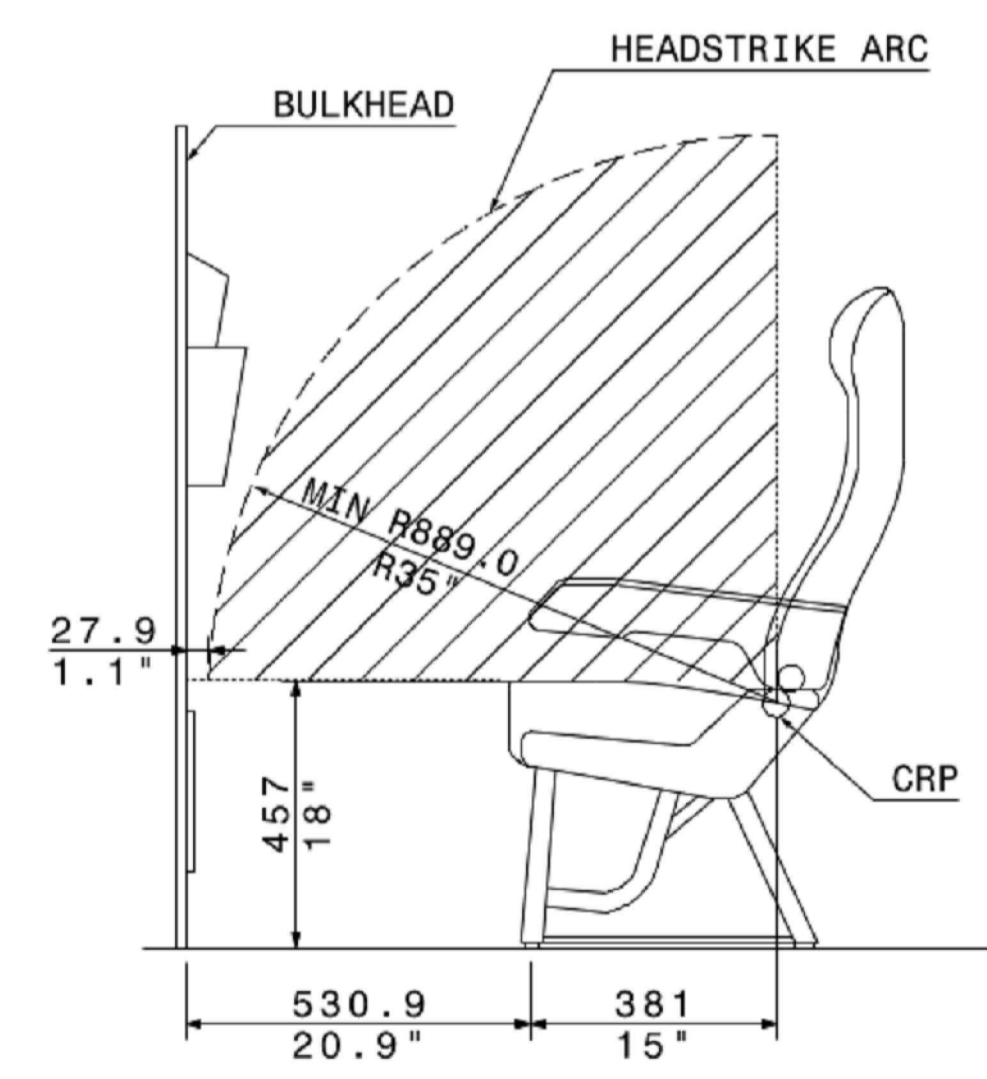
**VIEW B<sub>1-2</sub>** 6A 6C  
EMERGENCY EXIT CLEARANCE TYPE C  
DOOR 2 RH SHOWN  
LH OPPOSITE



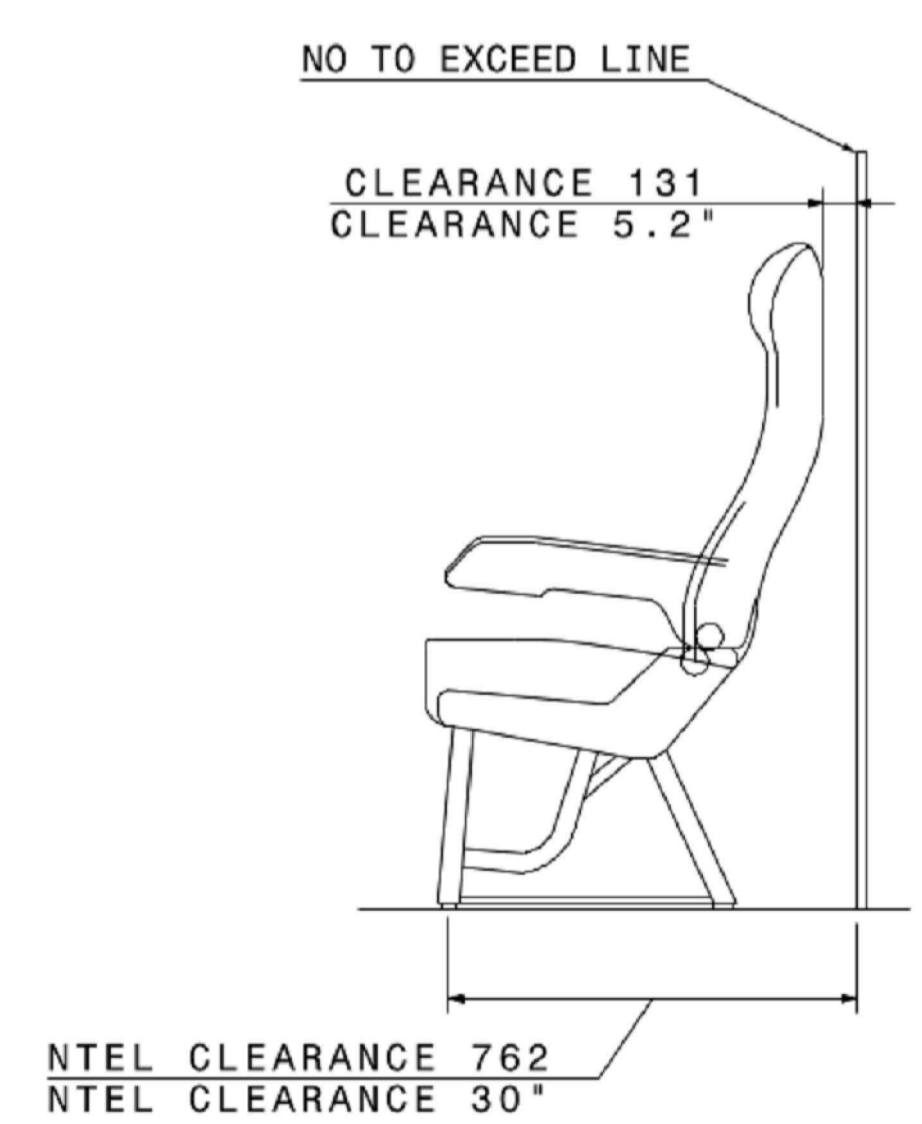
**VIEW C<sub>1-2</sub>** 6A 6C  
EMERGENCY EXIT CLEARANCE TYPE C  
DOOR 3 RH SHOWN  
SEATS ON ROW 24 OMITTED FOR CLARITY



**VIEW D<sub>1-2</sub>** 6A 6C  
EMERGENCY EXIT CLEARANCE TYPE C  
DOOR 3 LH SHOWN  
SEATS ON ROW 24 OMITTED FOR CLARITY



**VIEW A<sub>1-2</sub>**  
BULKHEAD CLEARANCE  
LH/RH SHOWN



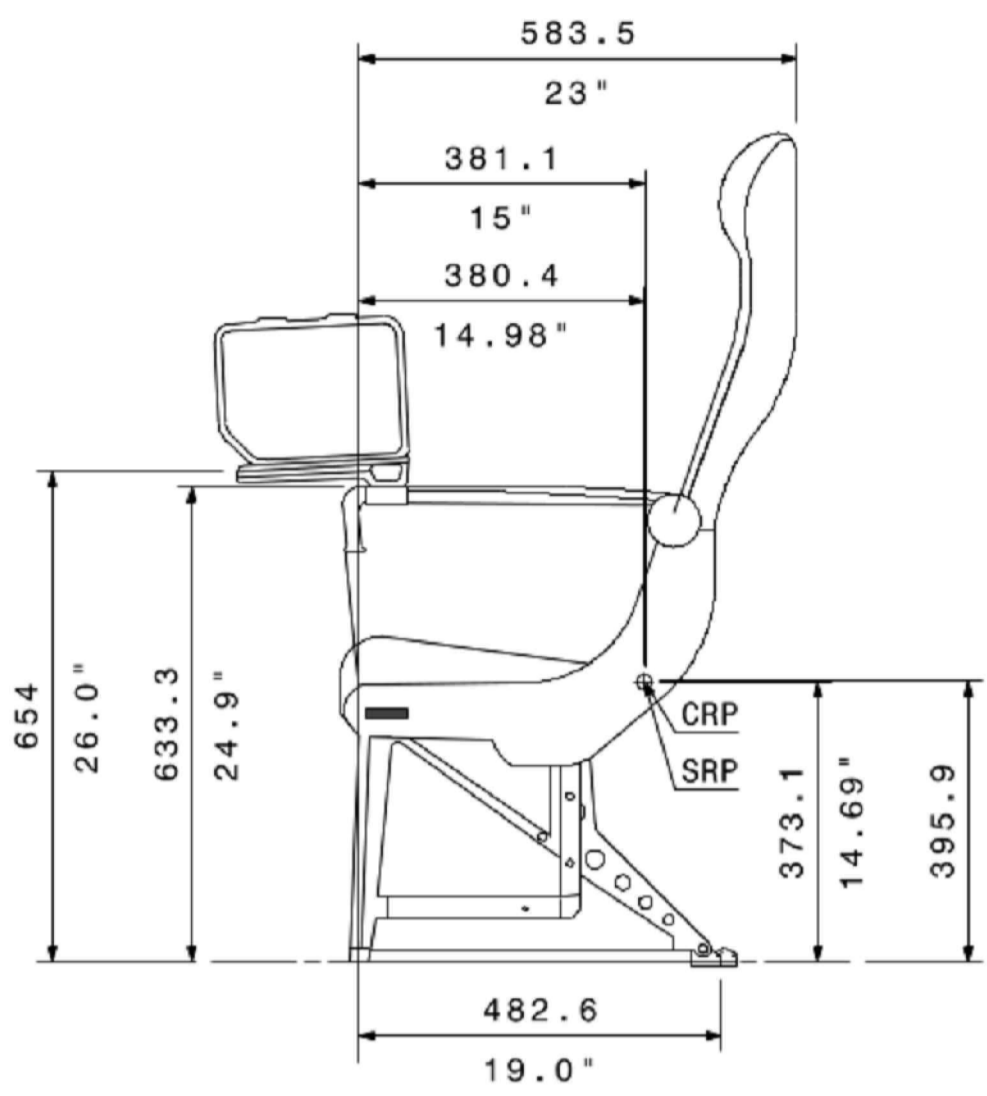
**VIEW E<sub>1-2</sub>** 8 9  
SEAT LAST ROW 37  
LH/RH SHOWN

TITLE			ORTHO.	SCALE
LOPA			ASME	NYS FORMAT A1
DRAWING NUMBER	DATE	USER ID	NAME	
1000007557_01	27-Apr-2020	509561	Maria Teresa Sanchez	
APPROVAL REFERENCE	CHECKED	DATE	USER ID	NAME
S.OAEZ.001939	27-Apr-2020	509085	509085	Ansel Antero Jukan Lubo
ATA	SHEET	REVISION	APPROVED	DATE
250000	2 OF 3	A	27-Apr-2020	508274
PRODUCT	S/N	DWG TYPE	APPROVED	DATE
A321	4461	LAY	27-Apr-2020	509085
PROJECT			A-01627948	

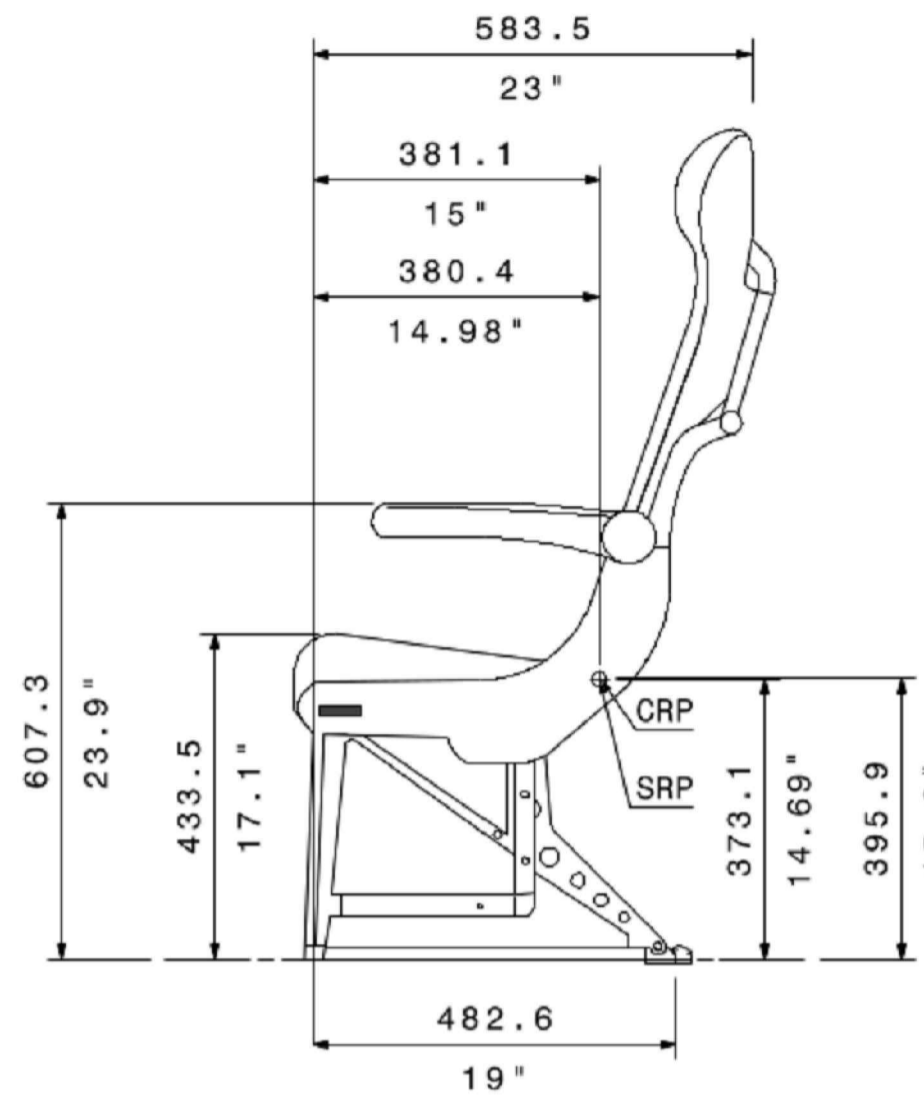
SEAT ENVELOPE (ACCORDING TO CMM 25-26-73 Rev.01)

REVISION	DESCRIPTION	DATE
A	INITIAL	-

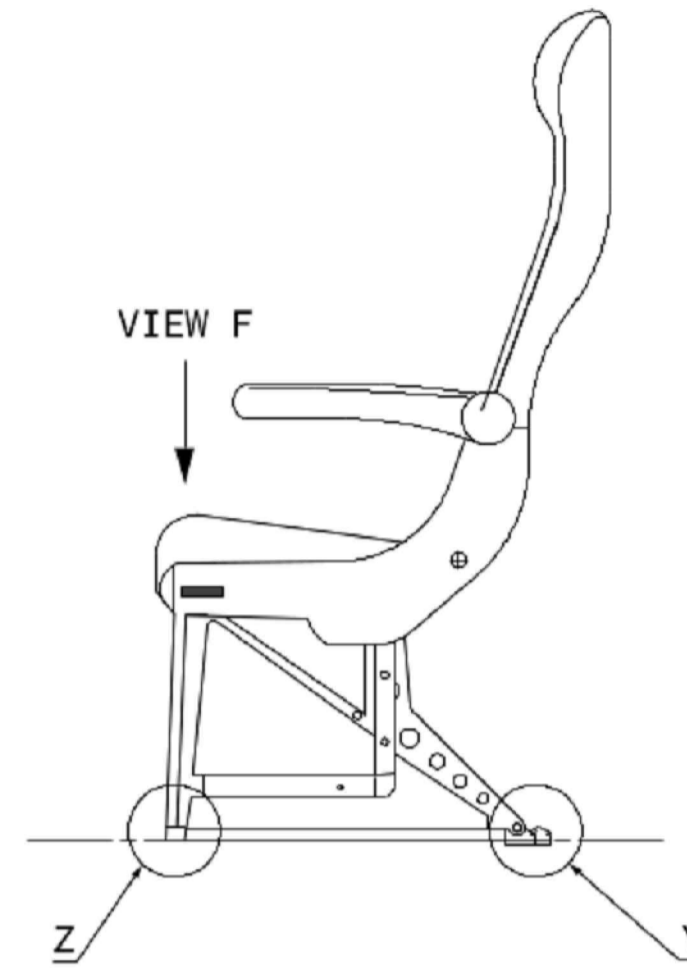
IAT SEAT  
MISSING DIMENSIONS SEE STD SEAT



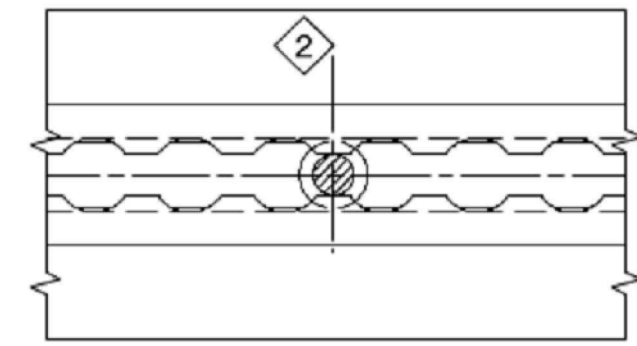
STD / EXIT SEAT 9



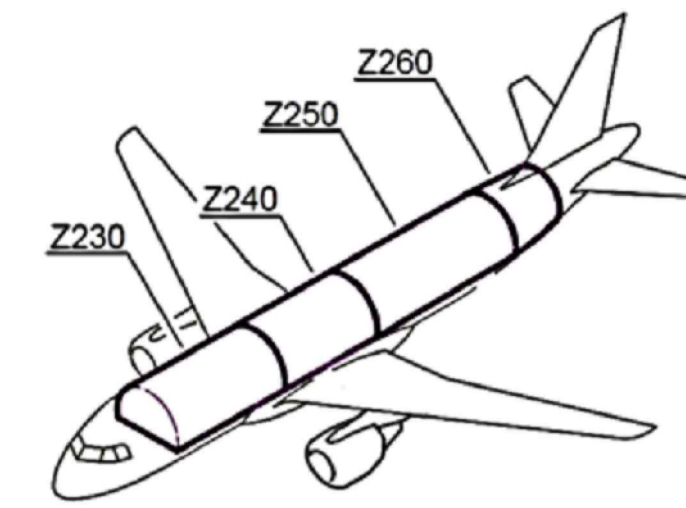
LAST ROW SEAT 8  
MISSING DIMENSIONS SEE STD SEAT



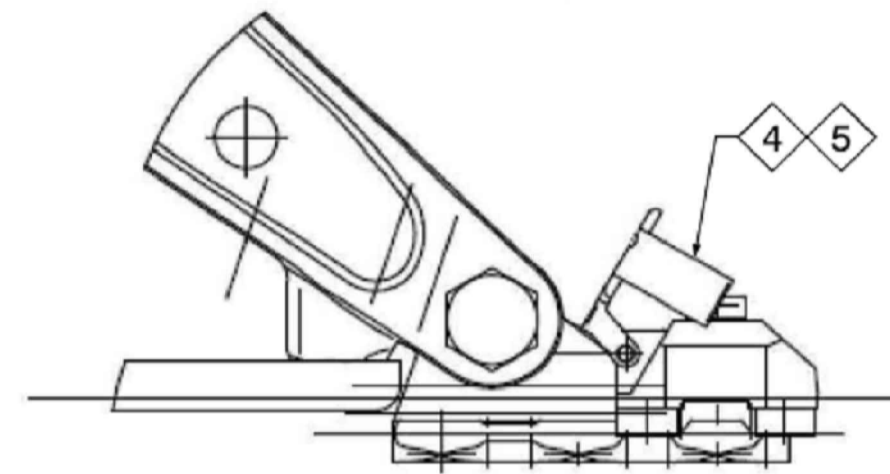
VIEW F



SEAT DETAIL OMITTED FOR CLARITY

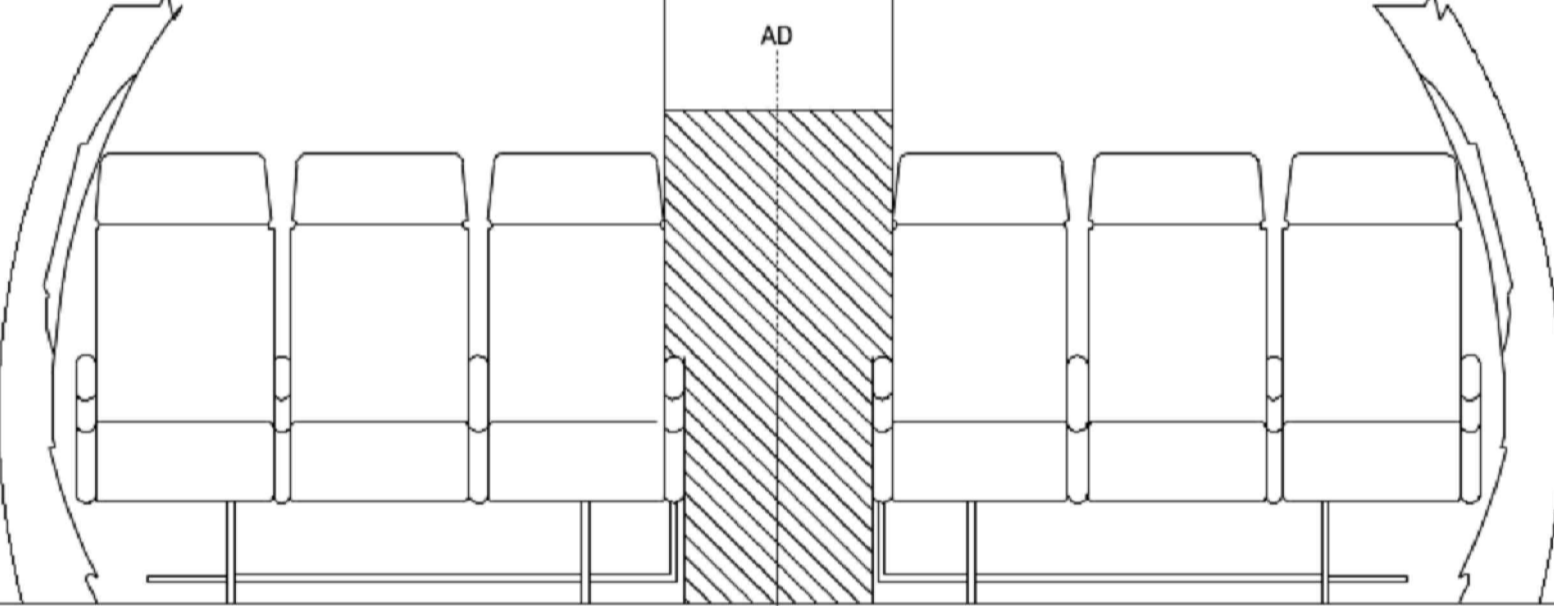


DETAIL Y



ROWS 1 TO 23: 647.7  
25.5"

ROWS 25 TO 37: 647.7  
25.5"

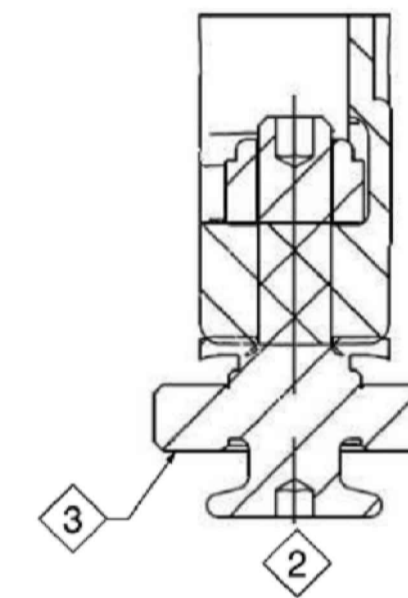


ROWS 1 TO 23: 518.9  
20.4"

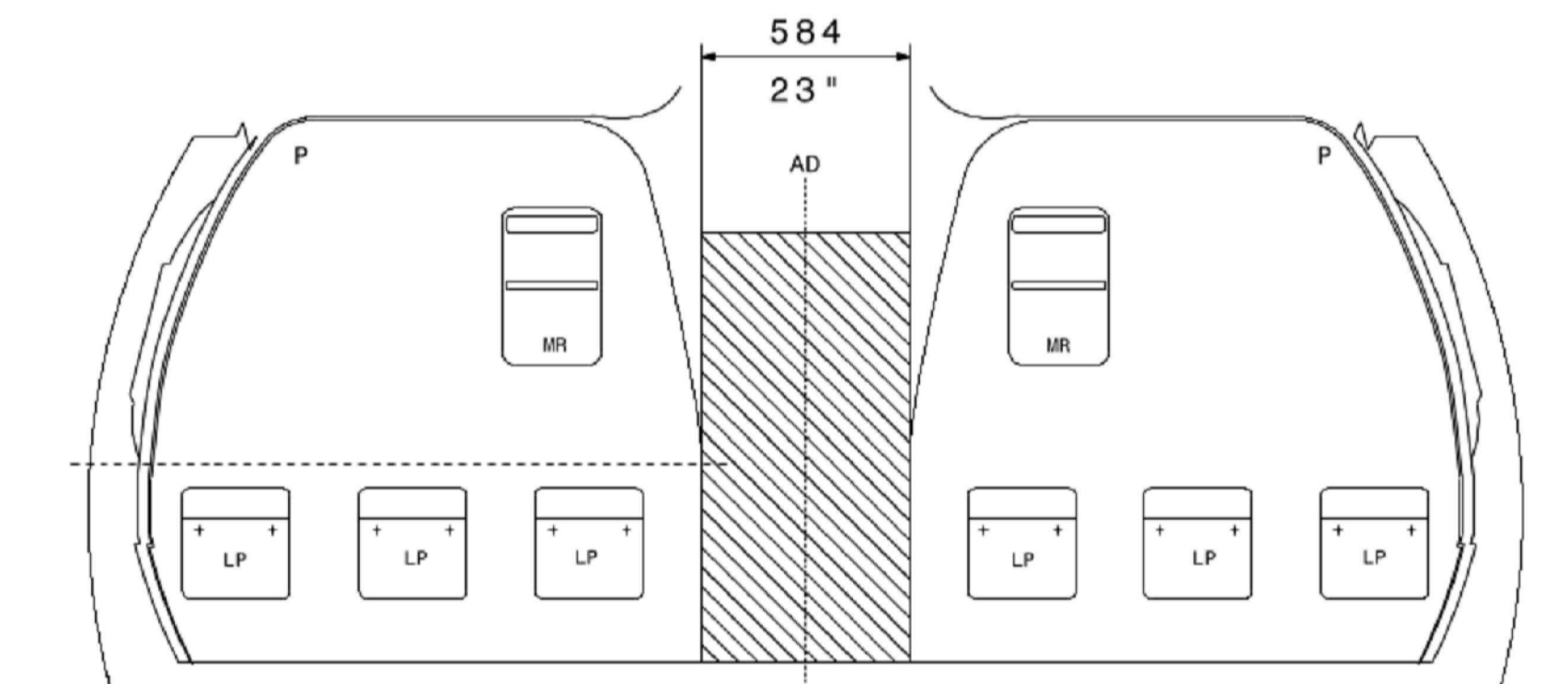
ROWS 25 TO 37: 518.9  
20.4"

SECTION G<sub>1-3</sub>-G<sub>1-3</sub>

DETAIL Z

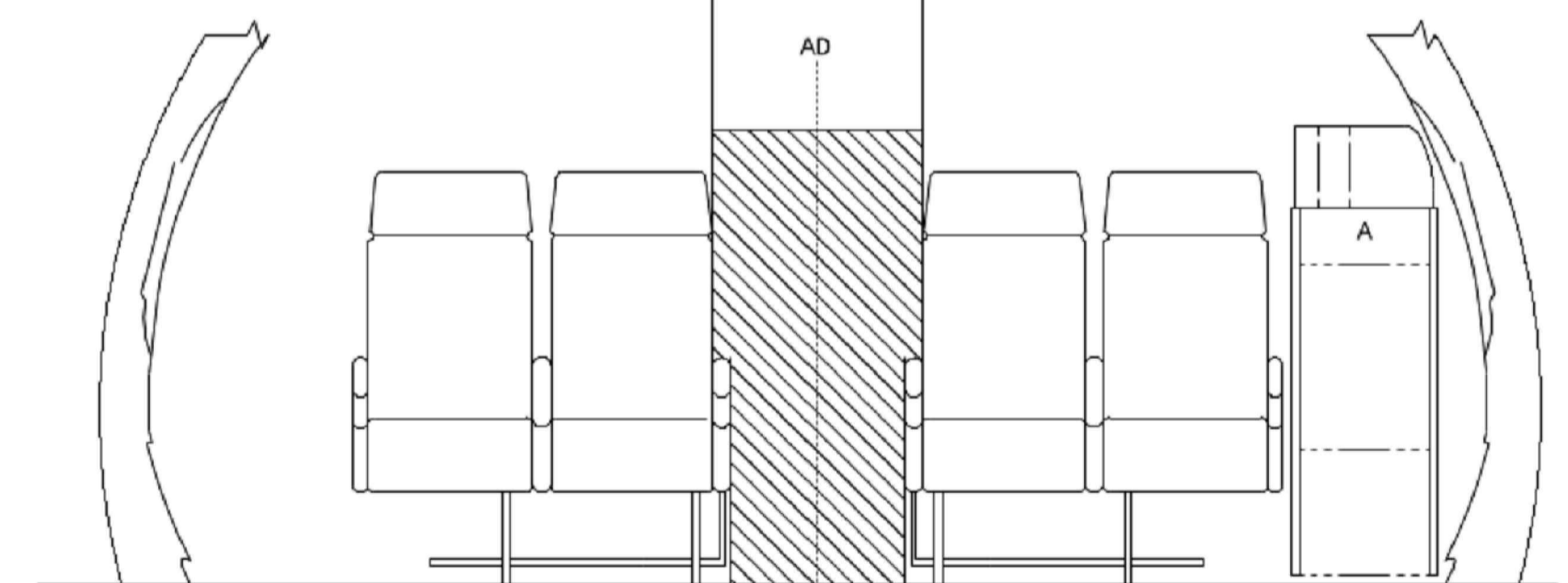


SECTION F<sub>1-3</sub>-F<sub>1-3</sub>



ROW 24: 557.5

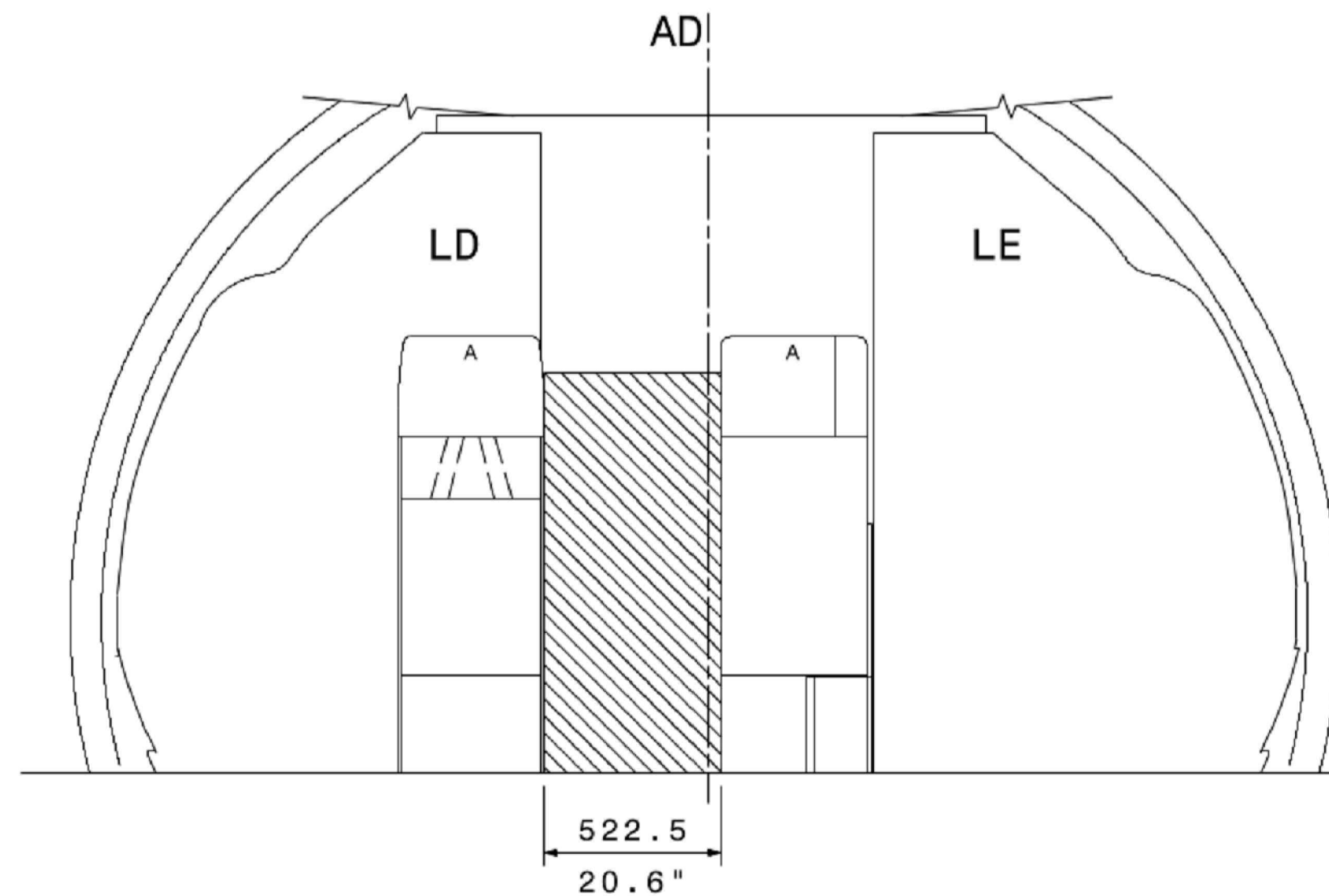
22"



ROW 24: 435.9

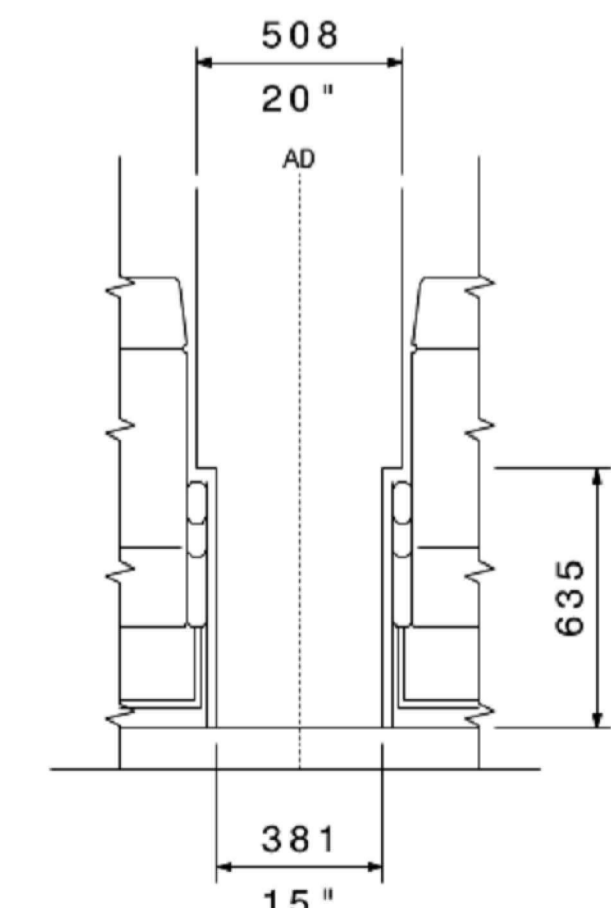
17.2"

SECTION H<sub>1-3</sub>-H<sub>1-3</sub>



SECTION J<sub>1-3</sub>-J<sub>1-3</sub>

DIMENSION OF AISLE WIDTH  
ACCORDING TO JAR 25.815



TITLE		DRAWING NUMBER		DATE		USER ID		NAME	
LOPA		100007557_01		27-Apr-2020		509561		Maria Teresa Sanchez	
APPROVAL REFERENCE		S.OAEZ.001939		27-Apr-2020		509085		Ansel Antero Jukon	
ATA		SHEET		REVISION		APPROVED		27-Apr-2020	
250000		3 OF 3		A		509085		508274	
PRODUCT		A321		S/N		4461		DWC TYPE LAY	
PROJECT		A-01627948							